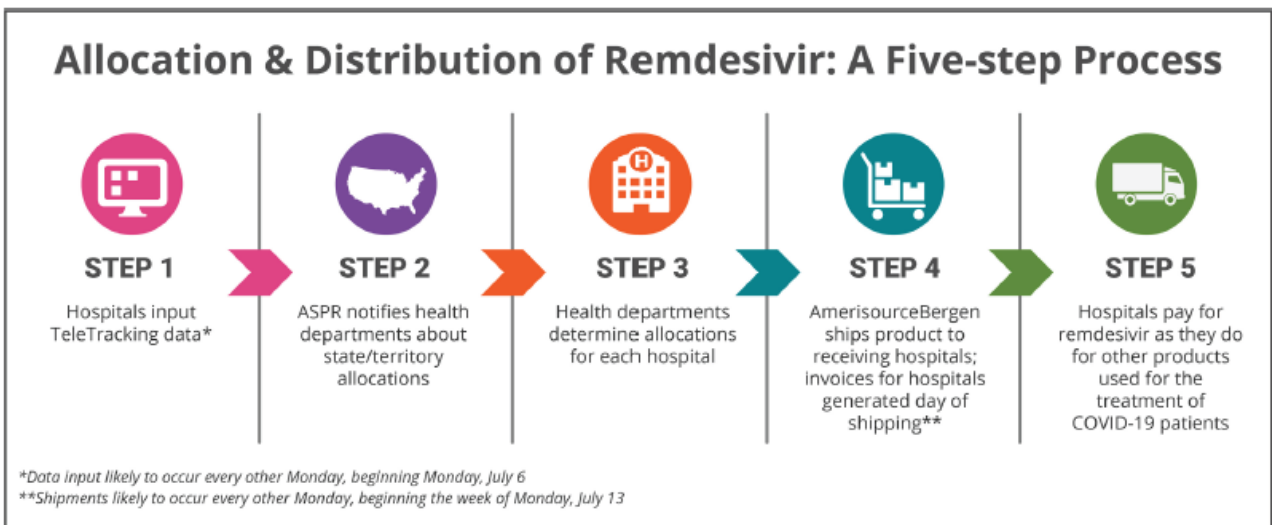


7/7/2020

FAQ Regarding Upcoming Commercial Remdesivir Allocation

On June 29, 2020, the Department of Health and Human Services (HHS) [announced](#) an agreement with Gilead Sciences to secure 500,000 treatment courses of commercial remdesivir for American hospitals through September 2020. In contrast to the previous donated supply of remdesivir, this supply will be purchased by American hospitals.

On Friday July 3, 2020, the HHS Office of the Assistant Secretary for Preparedness and Response (HHS/ASPR) [announced](#) further details on the upcoming allocation process, as summarized in the following figure:



On Monday July 6, 2020, representative members of the Society of Infectious Diseases Pharmacists (SIDP) met with ASPR and AmerisourceBergen (sole distributor of remdesivir) to clarify frequently asked questions regarding this upcoming process.

Frequently Asked Questions

- *What price should American hospitals expect to pay for commercial remdesivir when ordering from AmerisourceBergen?*

Most American hospitals should expect to pay the wholesale acquisition cost (WAC) of \$520 per 100 mg vial of remdesivir. For a typical 5-day course of remdesivir (total of 6 vials), this would equate to \$3,120 per course. The government price of \$390 per vial is applicable to federal agencies that directly purchase drugs, such as the Veterans' Affairs, Indian Health Services, Department of Defense, the Coast Guard and the Federal Bureau of Prisons, once on the Federal Supply Schedule, and will not apply to most American hospitals.

- *Per ASPR, state level allocations of commercial remdesivir will be based on American hospitals reporting data on suspected or confirmed COVID-19 cases every 2 weeks via the TeleTracking portal. The first reporting deadline for commercial remdesivir was Monday, July 6, 2020 at 8:00pm ET and deadlines will continue at the same time every 2 weeks thereafter. Is this reporting something hospital pharmacists or other clinicians should be performing?*

This reporting process was established when ASPR began allocating donated remdesivir supply in early May 2020 and, therefore, is likely already being performed by select hospital personnel. Hospital pharmacists or other clinicians should reach out to their local hospital administration to verify this report is being submitted at least once during each 2-week period via either the TeleTracking portal, the National Health Safety Network (NHSN), or HHS Protect.

- *When will shipments of commercial remdesivir begin?*

AmerisourceBergen expects to begin shipping commercial remdesivir the week of July 13, 2020. If a specific hospital is allocated commercial remdesivir during a given 2-week cycle, the hospital will be contacted by AmerisourceBergen to coordinate delivery of commercial remdesivir for that allocation cycle.

- *What should a hospital pharmacy department do in order to prepare for these orders?*

Hospital pharmacies should verify if they have an existing account with AmerisourceBergen. If so, no further action is needed, and AmerisourceBergen will contact each hospital once the state health department has communicated the allotted remdesivir supply for the specific hospital to AmerisourceBergen. If the hospital does not have an existing account or is unsure of its account status with AmerisourceBergen, the hospital pharmacy should email sales@asdhealthcare.com to request establishment of an account (typically takes 1-2 days). Hospital pharmacies should include the following information in their email:

- Facility Name
- Facility Shipping Address
- State Pharmacy License Number

AmerisourceBergen will also contact each hospital directly to coordinate purchase and shipment, even if an account has not yet been established.

- *Does an institution have to purchase all of the supply it is allocated?*

No, there is no requirement for an institution to purchase any or all of the commercial remdesivir supply allocated to it. AmerisourceBergen will communicate the available quantity allocated for a given 2-week cycle to the local institution. The institution will respond with the amount of commercial remdesivir they would like to purchase, up to the quantity allocated.

- *What happens if a hospital declines to purchase some or all of the allocated remdesivir for a given 2-week cycle?*

AmerisourceBergen will notify the state health department of any unpurchased commercial supply of remdesivir. The state health department will then determine next steps for the reallocation of the declined supply.

- *Do criteria for use of remdesivir implemented by a state health department still apply to this commercial remdesivir supply?*

Yes. Use of remdesivir in the United States currently remains under the FDA Emergency Use Authorization (EUA). This EUA outlines that local use of remdesivir will be determined by the state health department. State health departments may update their use criteria as the pandemic evolves.

SIDP is represented on the HHS Remdesivir Consultative Committee by Julie Ann Justo, Board Member-At-Large and Communications Director, along with Jason Pogue, SIDP President, as an alternate representative.

Please visit sidp.org/covid-19 for additional educational offerings and resources from SIDP related to COVID-19.

About SIDP

SIDP is an association of pharmacists and allied healthcare professionals dedicated to promoting the appropriate use of antimicrobial agents. SIDP membership is comprised of 1,500 members in hospital, academic, industry, governmental organizations, and other practice settings across all 50 states and throughout the globe. The mission of SIDP is to advance infectious diseases pharmacy and lead antimicrobial stewardship in order to optimize the care of patients.

Contact

Email: sidp@affinity-strategies.com

Phone: (331) 248-7888

Mailing Address:

121 W. State Street

Geneva, IL 60134